

AVAILABLE 10+/- ACRES

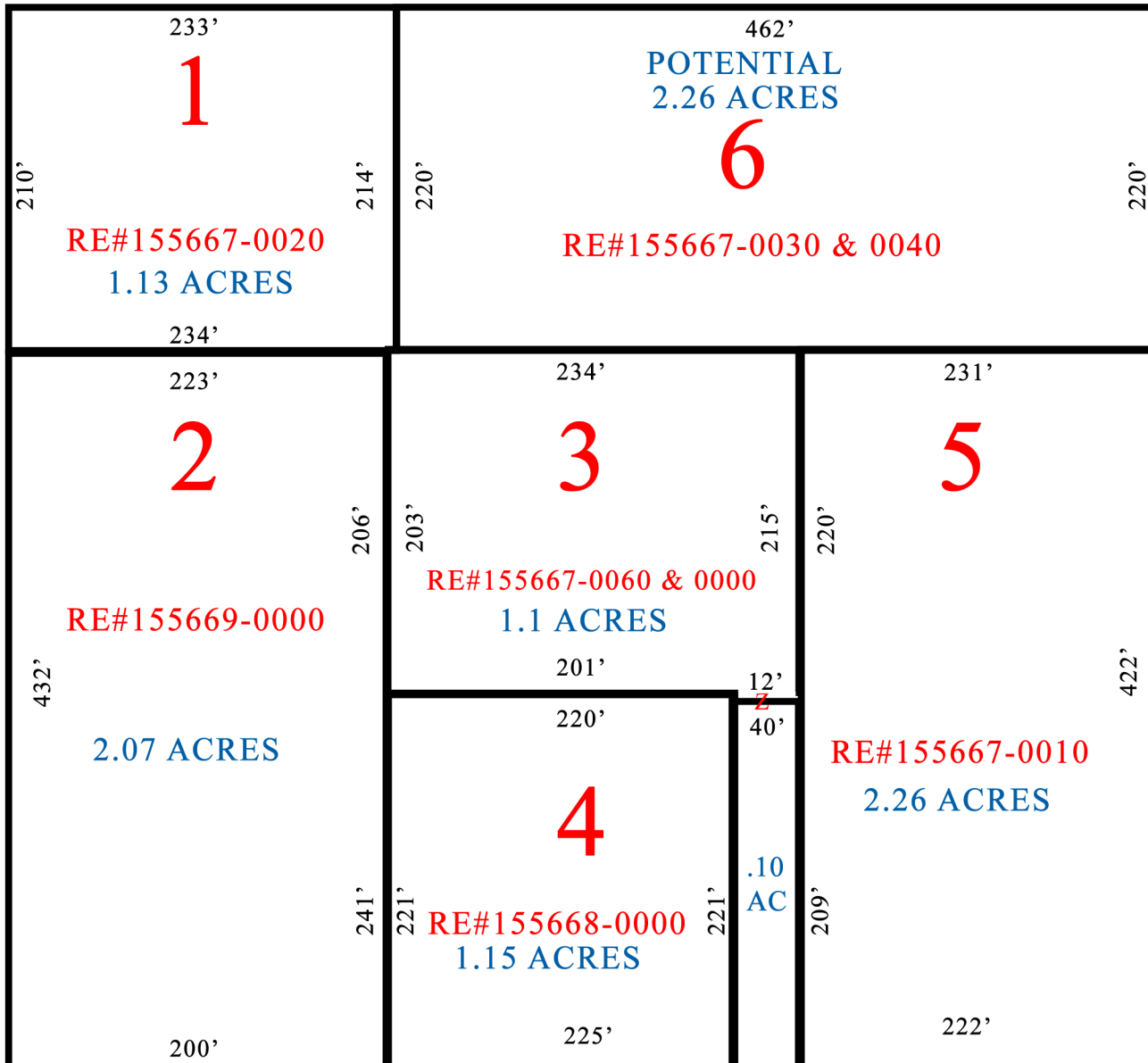
Prime Residential Development - Current Zoning: RR

*Coleman Road is conveniently located off Hood Road at the Intersection of Old St. Augustine & Hood Roads

Coleman Road



THE
STRICKLANDGROUP
Your Residential Specialists



Teena Strickland, JD
teena@stricklandrealestate.com
O 904-372-7371
F 904-372-7393
C 904-403-3526

3948 3rd Street South, Suite 333
Jacksonville Beach, FL 32250

Disclaimer: Although the information contained herein is to the best of our research, knowledge and ability the listed details, SF, acreage and similar information herein is approximate and we cannot guarantee its exactness and recommend verification for further utilization.